



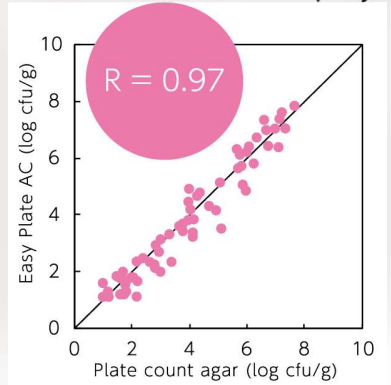
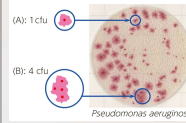
Easy Plate™

Easy Plate	Object Microorganism	Incubation Temperature	Incubation Times	Storage (Unopened)	Shelf Life	Certifications	Packing
AC	Aerobic bacteria	35± 1°C	48± 2 hours	2-8°C	18 Months after manufacturing date	AOAC RI PTM Certified MicroVal Certified / Nordval Certified	100 tests (25 tests x4 Bags)
CC	Coliform		24± 1 hours				
EC	E. Coli / Coliform		24± 1 hours				
YM-R	Yeast and Mold	25± 1°C	48± 2 hours		12 Months after manufacturing date.	In process	
SA	<i>Staphylococcus aureus</i>	35± 1°C 37± 1°C	24± 1 hours				
EB	<i>Enterbacteriaceae</i>		24± 1 hours				
AC-R	Aerobic bacteria	35± 1°C	24± 1 hours				



Easy Plate AC

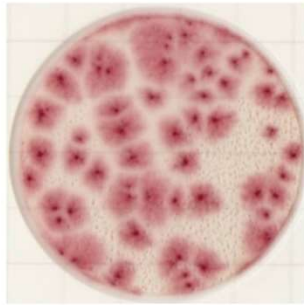
Kikkoman[®]
Kikkoman Biochemifa Company



Escherichia coli
(NBRC 15034)



Proteus mirabilis
(NBRC 105697)



Staphylococcus aureus
(ATCC 25923)



Plate count agar



Bacillus subtilis
(NBRC 3134)



Bacillus cereus
(NBRC 15305)



Bacillus licheniformis
(NBRC 12200)



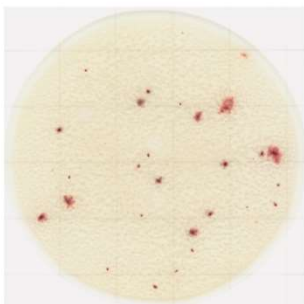
Raw salmon



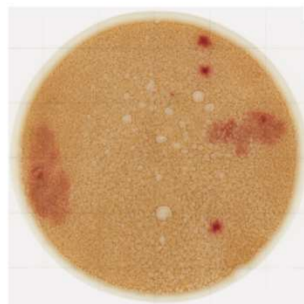
Raw ground chicken



Raw bean sprouts



Chocolate



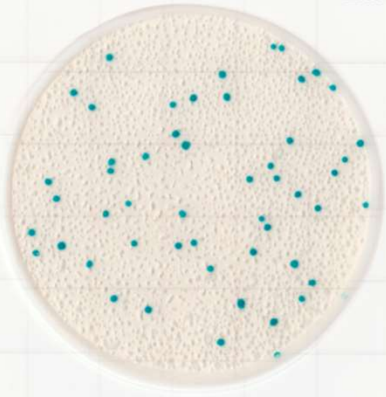
Icecream + *E. coli*



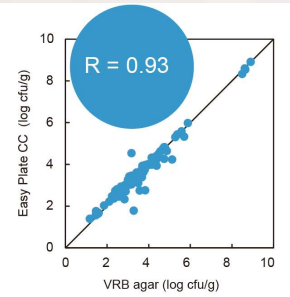
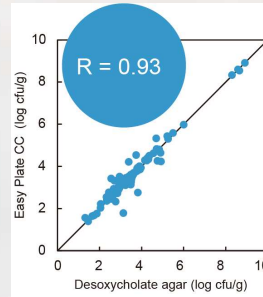
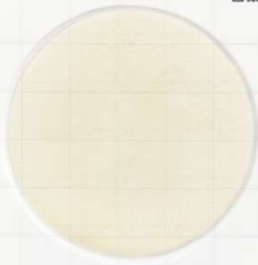
Easy Plate CC

kikkoman
Kikkoman Biochemifa Company

CC XXXXXX-XX-XXXXXX
EXP 20XX. XX. XX



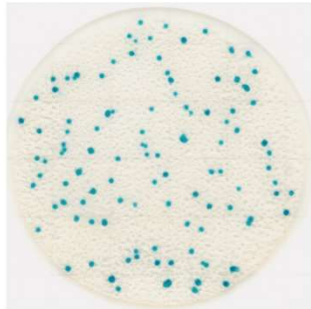
CC XXXXXX-XX-XXXXXX
EXP 20XX. XX. XX



Escherichia coli
(NBRC 15034)



Citrobacter freundii
(NBRC 12681)



Klebsiella pneumoniae
(NBRC 14940)



Raw ground chicken



Enterobacter aerogenes
(NBRC 13534)



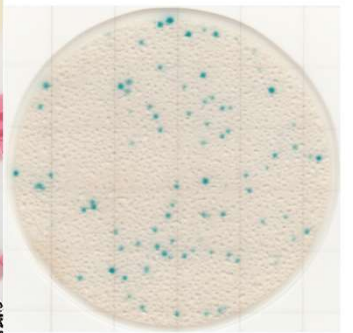
Enterobacter cloacae
(NBRU 13536)



Escherichia fergusonii
(NBRC 102419)



Raw ground pork



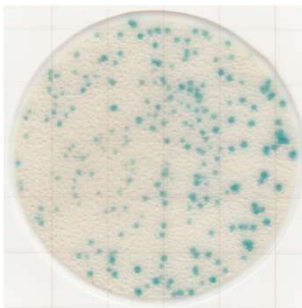
Raw tuna



Cookie + *E. coli*



Pasteurized milk +
K. pneumoniae

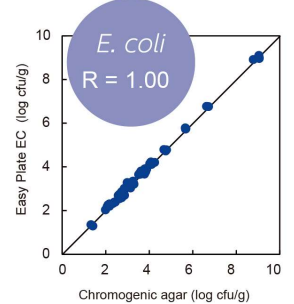
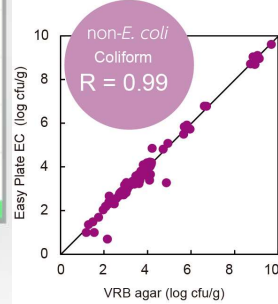
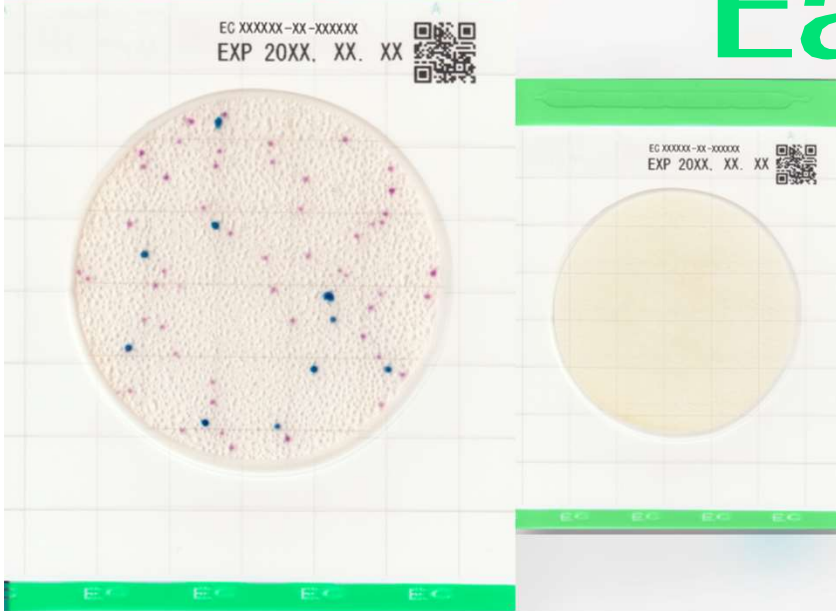


Radish sprouts



Easy Plate EC

kikkoman
Kikkoman Biochemifa Company

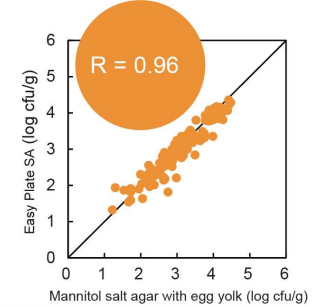
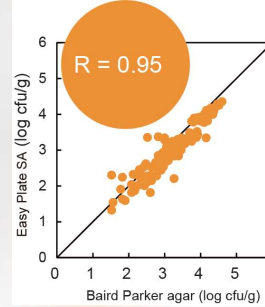


<p><i>Escherichia coli</i> (NBRC 15034)</p>	<p><i>Escherichia coli</i> (NBRC 13500)</p>	<p><i>Escherichia coli</i> (NBRC 102203)</p>	<p><i>Klebsiella pneumoniae</i> (ATCC 13883)</p>
<p>Roast beef + <i>E. coli</i></p>	<p>Omelet + <i>E. coli</i></p>	<p>Icecream + <i>E. coli</i></p>	<p><i>Citrobacter freundii</i> (NBRC 12681)</p>
<p>Raw ground chicken</p>	<p>Raw salmon</p>	<p>Raw shrimp</p>	<p><i>Enterobacter cloacae</i> (ATCC 222)</p>

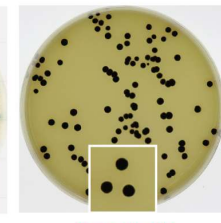
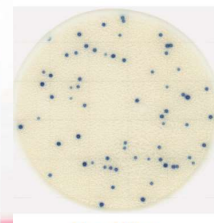
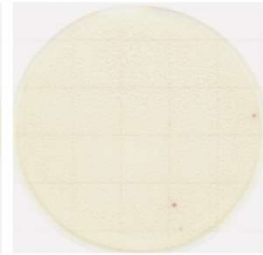
Easy Plate

SA

kikkoman®
Kikkoman Biochemifa Company



Easy Plate™ SA BP agar MSEY agar



Bacillus licheniformis
(NBRC 12200)

Bacillus cereus
(D0068)

Bacillus cereus
(NBRC 13494)

Positive

Egg-yolk
reaction negative

Egg-yolk
reaction negative

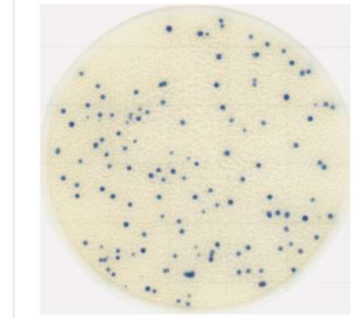
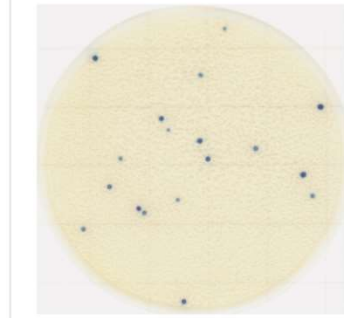
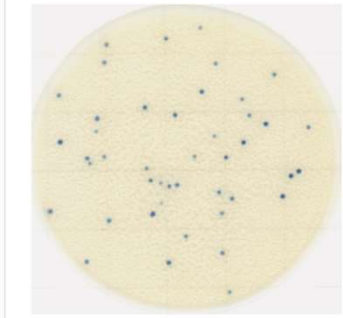
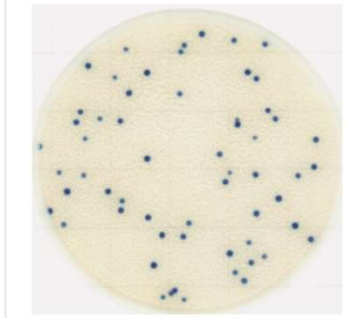
※ These pictures show *S. aureus* ATCC13565

Staphylococcus aureus
(ATCC 25923)

Staphylococcus aureus
(NBRC 13276)

Staphylococcus aureus
(NBRC 100910)

Staphylococcus aureus
(D0152)

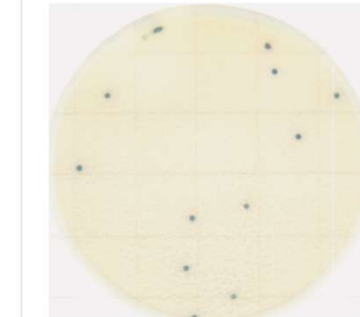
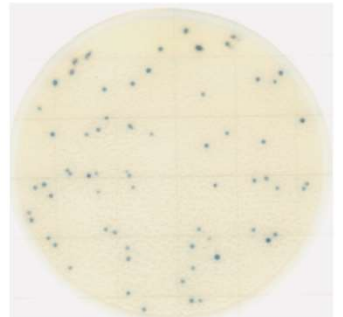
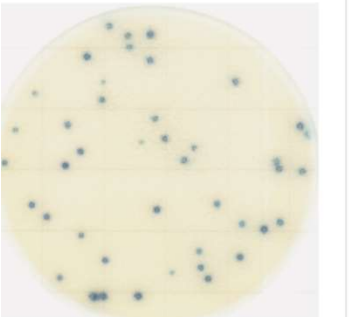


Pasteurized milk +
S. aureus

Cream puff + *S. aureus*

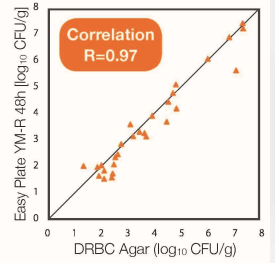
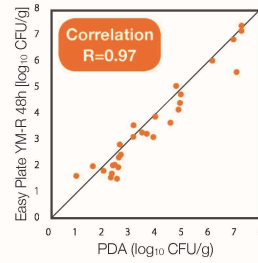
Cooked ham + *S. aureus*

Egg sandwich + *S. aureus*





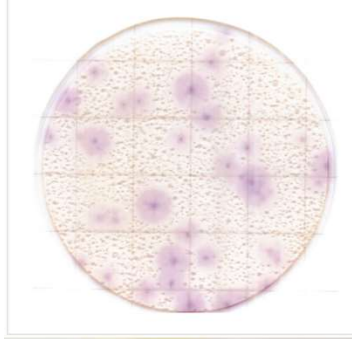
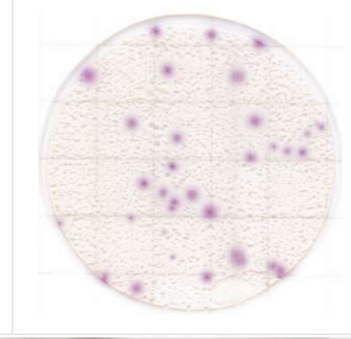



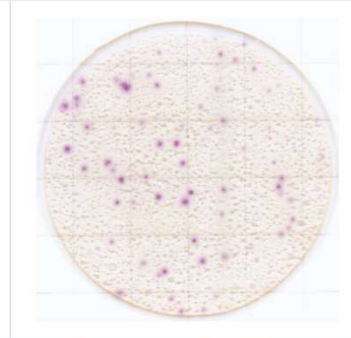




Easy Plate YM-R

kikkoman[®]
Kikkoman Biochemifa Company

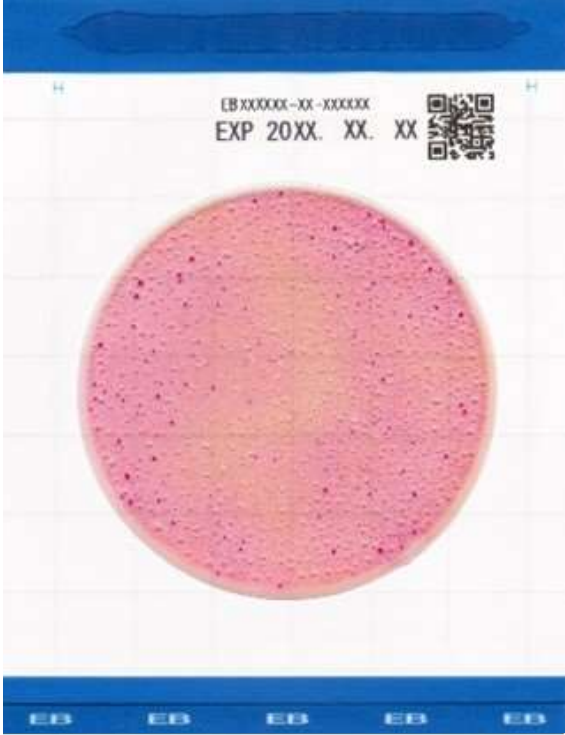
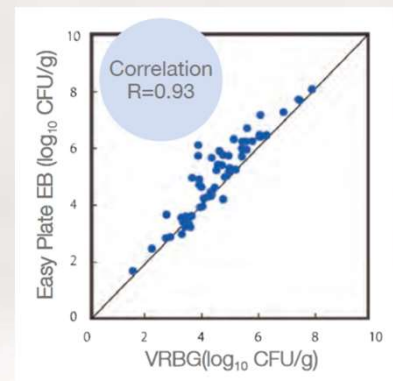


*Data is provided by Center for Fungal Consultation, incorporated nonprofit organization

<p>Dressing+ <i>Wickerhamomyces anomalus</i></p> 	<p><i>Zygosaccharomyces Rouxii</i></p> 	<p><i>Geotrichum candidum</i></p> 	<p>PDA Medium</p>  <p>120 hours incubation</p>
<p><i>Aspergillus flavus</i></p> 	<p><i>Auerobasidium pullulans</i></p> 	<p><i>Saccharomyces cerevisiae</i></p> 	<p>Ham</p> 
<p><i>Zygosaccharomyces rouxii</i></p> 	<p><i>Penicillium glabrum</i></p> 	<p><i>Candida parapsilosis</i></p> 	<p>Sandwich</p> 

Easy Plate EB

kikkoman
Kikkoman Biochemifa Company



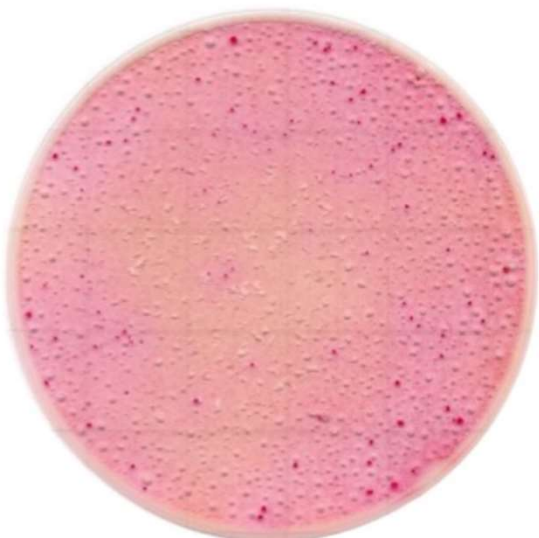
Klebsiella pneumouniae (NBRC 14940)

Escherichia coli (NBRC 15034)



Freeze pork

Beef brisket skirt



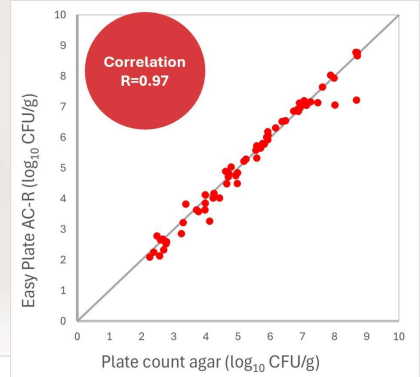
Easy Plate AC-R

kikkoman®
Kikkoman Biochemifa Company

ARXXXXXXXX-XX-XXXXXX
EXP 20XX. XX. XX



ARXXXXXXXX-XX-XXXXXX
EXP 20XX. XX. XX

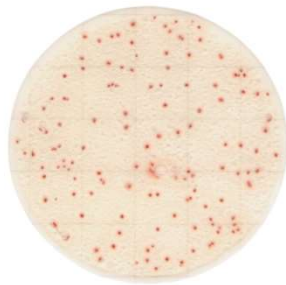
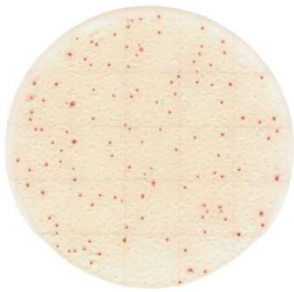


Bacillus subtilis
(NBRC 3134)

Bacillus amyloliquefaciens
(D0021)

Escherichia coli
(NBRC 15034)

Plate count agar

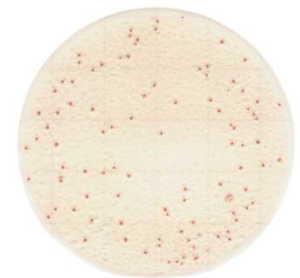


Sprouts

Milkshake

Cinnamon

Klebsiella pneumoniae
(NBRC 14940)



Stuffed peppers

Salmon

Green tea

Proteus mirabilis
(NBRC 105697)

